

# NEXT GENERATION PEPTIDES

Developments of new cutting-edge peptide-based drugs and molecules with pharmacological, diagnostic and cosmetic interest.

**Special**  
 **Chemicals**

## SCH- tripeptide 10 citrulline



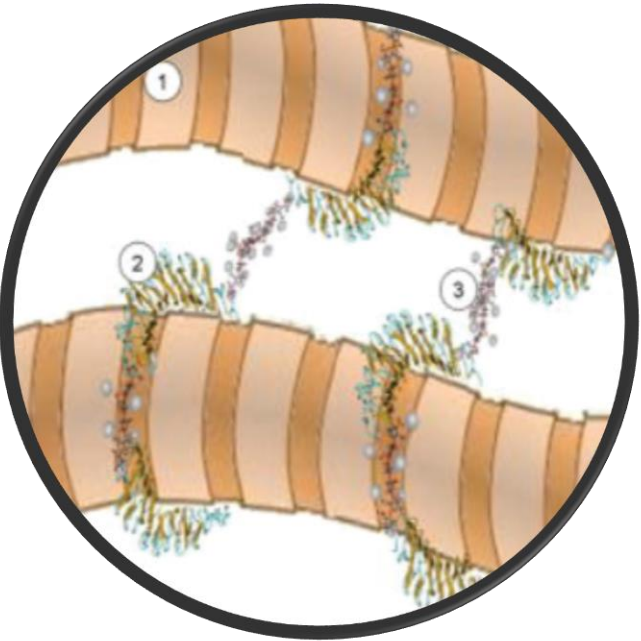
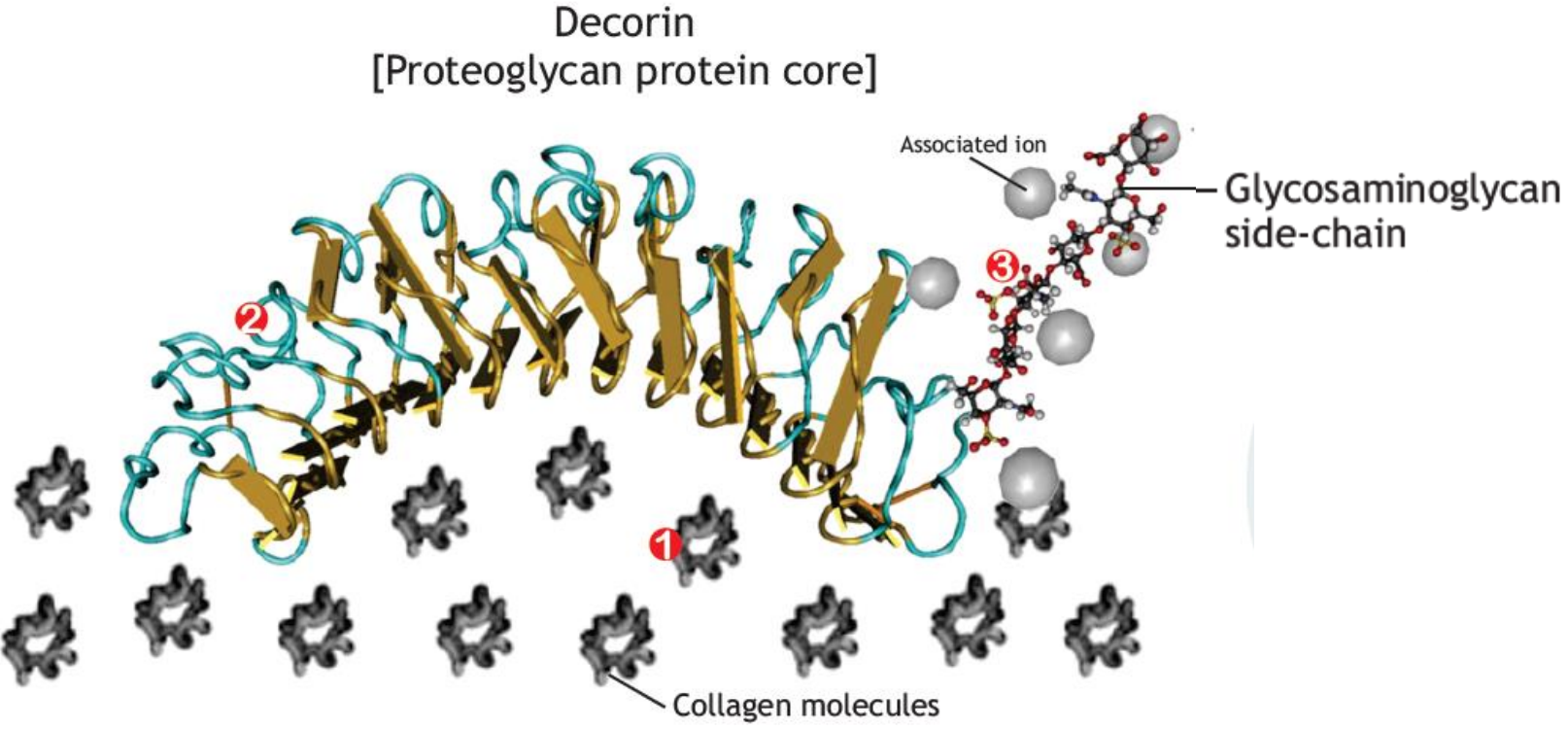
# SCH- tripeptide 10 citrulline

A TRIPEPTIDE WHICH THAT MIMIC THE SEQUENCES OF DECORIN  
THAT SPECIFICALLY BIND TO COLLAGEN FIBRILS

IT REGULATES FIBRINOGENESIS, CONTROL COLLAGEN FIBRIL DIAMETER  
AND INCREASE SKIN SUPPLENESS, DUE TO A BETTER COHESION  
OF COLLAGEN FIBERS WHICH PROVIDES HIGHER RESILIENCY,  
IMPROVING SKIN APPEARANCE

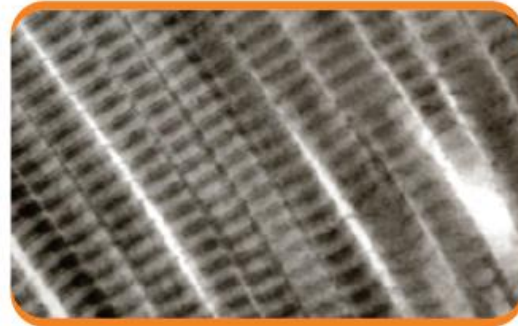
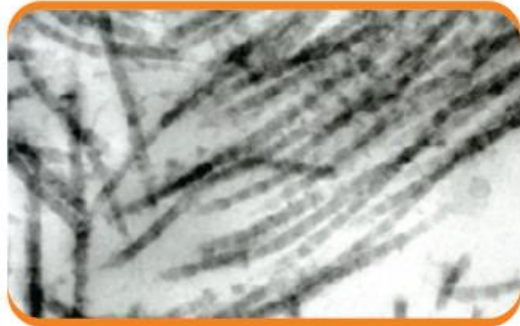


SCH- tripeptide 10 citrulline

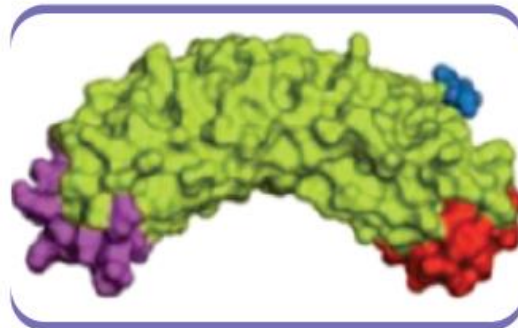


SCH- tripeptide 10 citrulline

## DECORIN ALLIGNES COLLAGEN FIBERS



Decorin is synthesized and secreted by fibroblasts and comprises 30-40% of all proteoglycans of the skin



◀ Decorin binds directly to collagen

SCH- tripeptide 10 citrulline

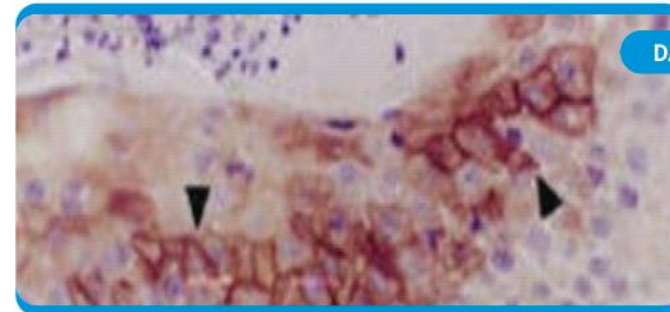
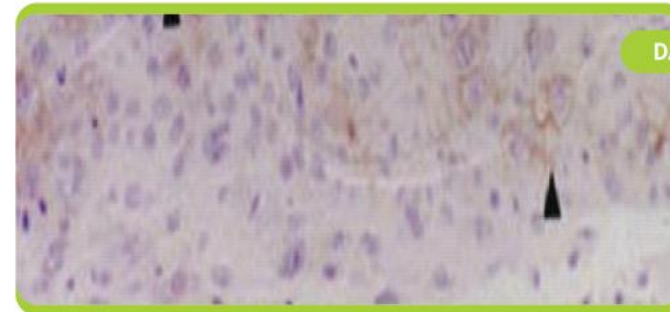


SCH- tripeptide 10 citrulline

## TRIPEPTIDE 10 CITRULLINE, EX VIVO STUDY

HUMAN SKIN SAMPLES INCUBATED  
WITH 5% TRIPEPTIDE 10 CITRULLINE  
FOR 2 DAYS

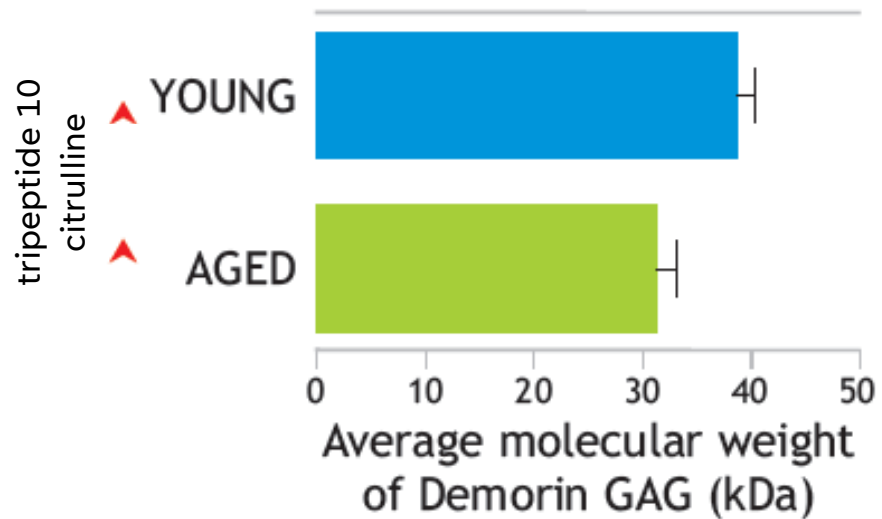
COLLAGEN FIBERS ARE VISUALISED BY  
STAINING WITH SIRIUS RED



Collagen deposits  
are significantly increased  
in treated samples

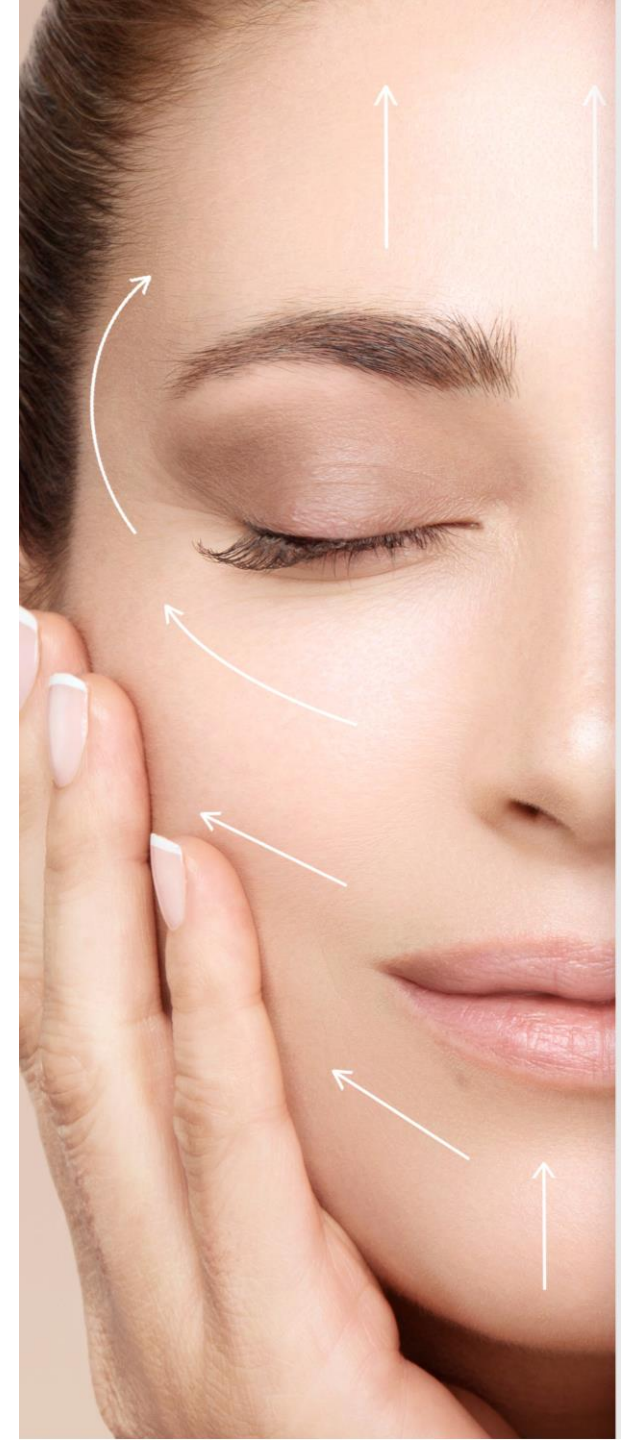
SCH- tripeptide 10 citrulline

MOLECULAR SIZE OF DECORIN  
IS REDUCED IN AGED HUMAN SKIN  
TRIPLEPTIDE 10  
CITRULLINE RECOVERS SKIN YOUTH



DECORIN DECREASED WITH AGE

- tripeptide 10 citrulline

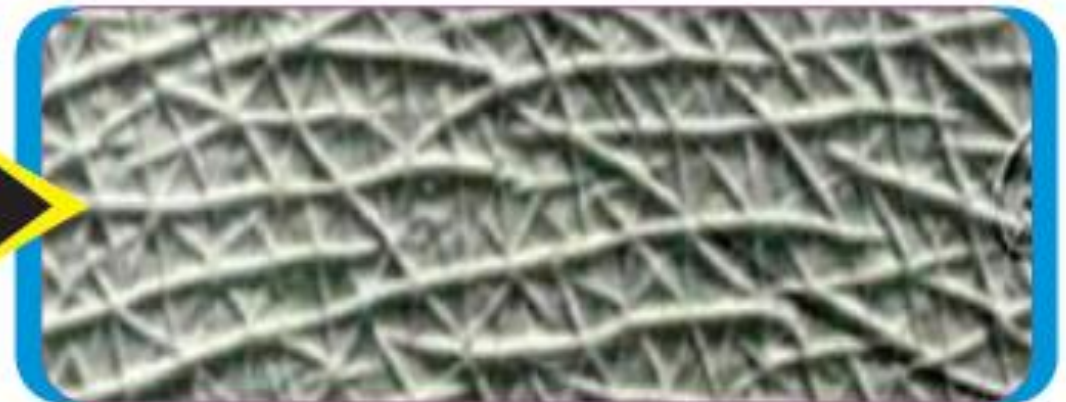


SCH- TRIPEPTIDE 10 CITRULLINE

**DAMAGED SKIN  
BY SUN LIGHT**



**REPAIRED SKIN AFTER TREATMENT  
WITH DECORIN BOOSTER**





## SPECIFICATIONS

- 🌱 Apperance: Powder form
- 🌱 INCI.: dextran, tripeptide-10 citrulline
- 🌱 Solubility: Water soluble
- 🌱 Recommended dose: 3-5%from 1g/L solution
- 🌱 LEG AL STATUS: EU|US|CN|JP|KR|AUS



# THANK YOU

*Thank you for your interesting and attention!  
If you need sample and technical data, please  
contact us without hesitation*

**Special**  
Chemicals