

SCH REINFORCE PEPT 78

**NEXT
GENERATION
PEPTIDES**

Developments of new cutting-edge peptide-based drugs and molecules with pharmacological, diagnostic and cosmetic interest.

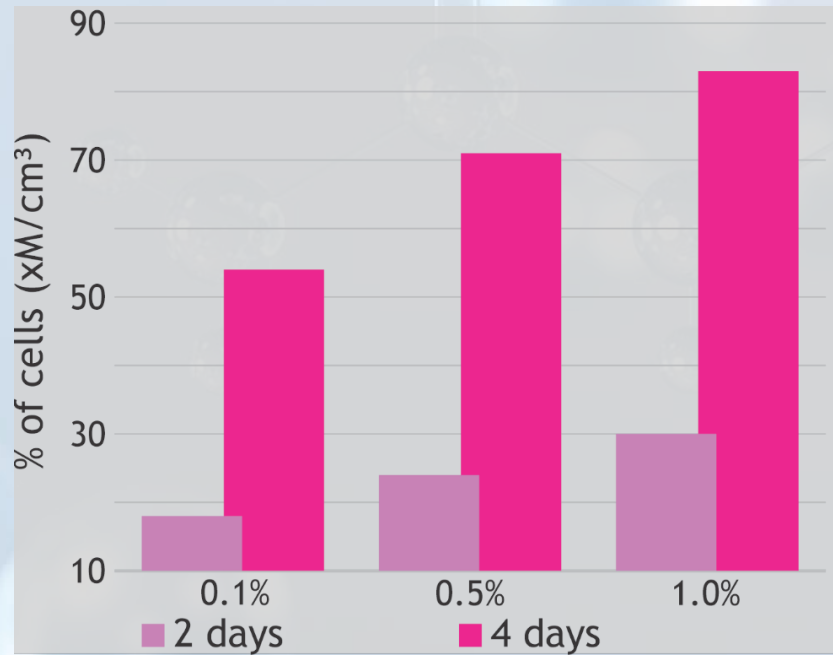
SCH REINFORCE PEPT 78

- 
- ❁ Helps to reinforce the physical barrier integrity.
 - ❁ A reinforcement in cell cohesion and barrier optimize the skin's protective and regenerative cycles.
 - ❁ Skin aging is caused by internal (endogenous) and external (environmental) factors.
 - ❁ Effects on skin are visible: wrinkles, expression lines, age spots, loss of elasticity...
 - ❁ ECM (Extracellular matrix) fibers: key-factor on the structure and elasticity of skin.
 - ❁ Skin aging: a consequence of a reduction in the quantity and/or quality of the ECM.
 - ❁ Peptide promotes cell proliferation to help skin reconstruction.
 - ❁ Works as a scaffold to help tissue regeneration and extracellular formation.

SCH REINFORCE PEPT 78

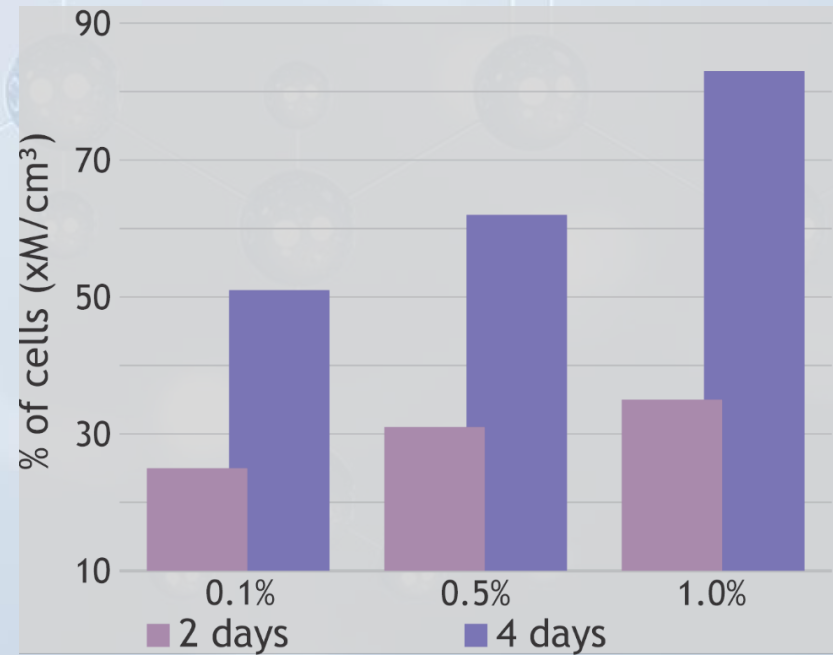
Cell proliferation in Keratinocytes.

Three concentrations tested.
Cell initial radio: $2,5 \times 10^3$ cells/cm²



Cell proliferation in Fibroblast

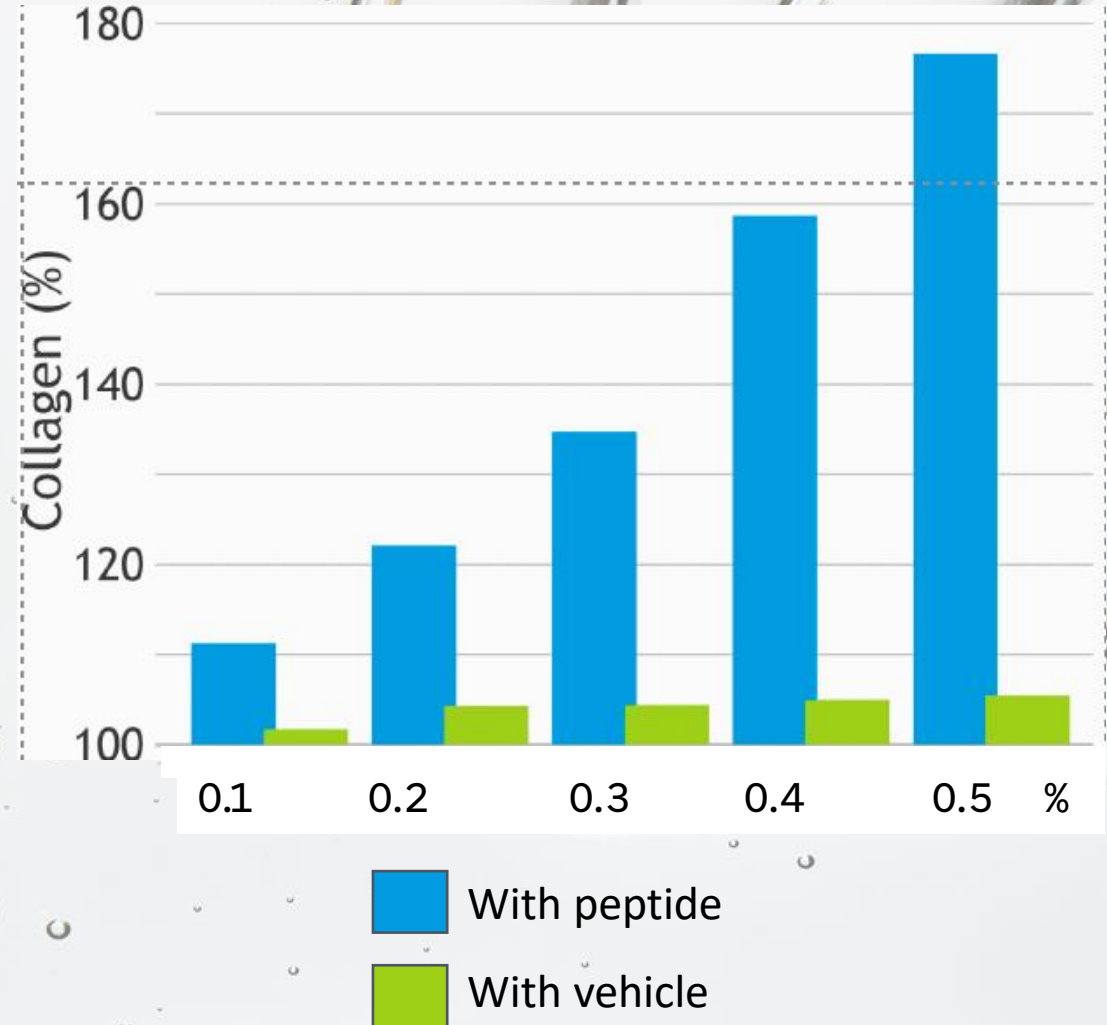
Three concentrations tested.
Cell initial radio: $1,0 \times 10^3$ cells/cm²



SCH REINFORCE PEPT 78

Induction of synthesis of Collagen type I

Human dermal Fibroblasts Several concentrations tested:
0- 0.1%-0.2%-0.3%-0.4%-0.5%



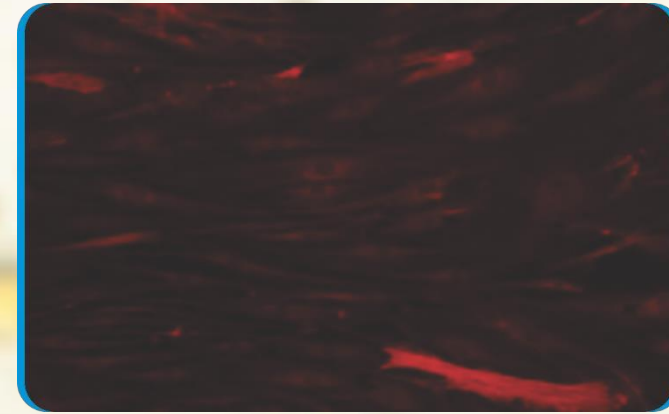
SCH REINFORCE PEPT 78

INDUCES THE SYNTHESIS OF:

- ELASTIN
- PROTEOGLICANS
- LAMININ
- TENASCIN
- COLLAGEN TYPE I
- COLLAGEN TYPE III
- COLLAGEN TYPE IV
- COLLAGEN TYPE VIII

SCH REINFORCE PEPT 78

COLLAGEN TYPE I BIOSYNTHESIS

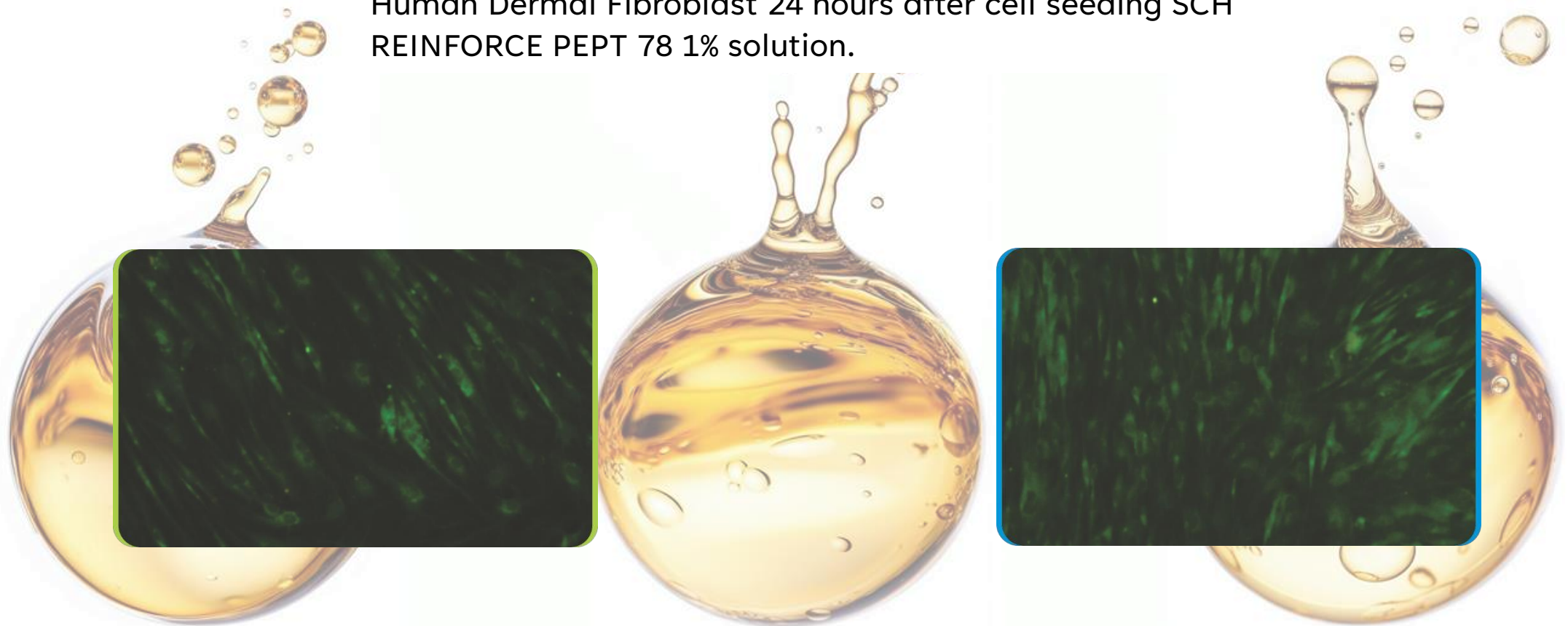


Human Dermal Fibroblast 24 hours after cell seeding SCH REINFORCE PEPT 78 1% solution.

SCH REINFORCE PEPT 78

COLLAGEN TYPE VI BIOSYNTHESIS

Human Dermal Fibroblast 24 hours after cell seeding SCH REINFORCE PEPT 78 1% solution.



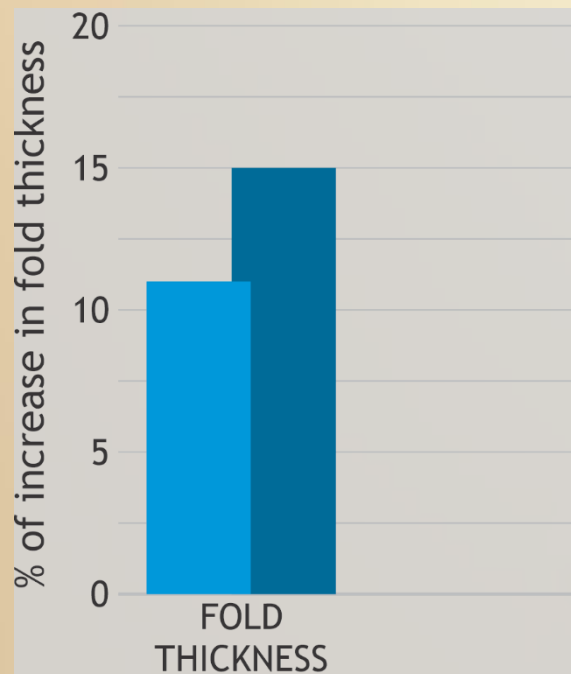
SCH REINFORCE PEPT 78

Evaluation of the anti-wrinkle and re-densifying effect.

Clinical test in 20 volunteers, women 40-60 years.

Cream was applied to the face, twice daily for 56 days.

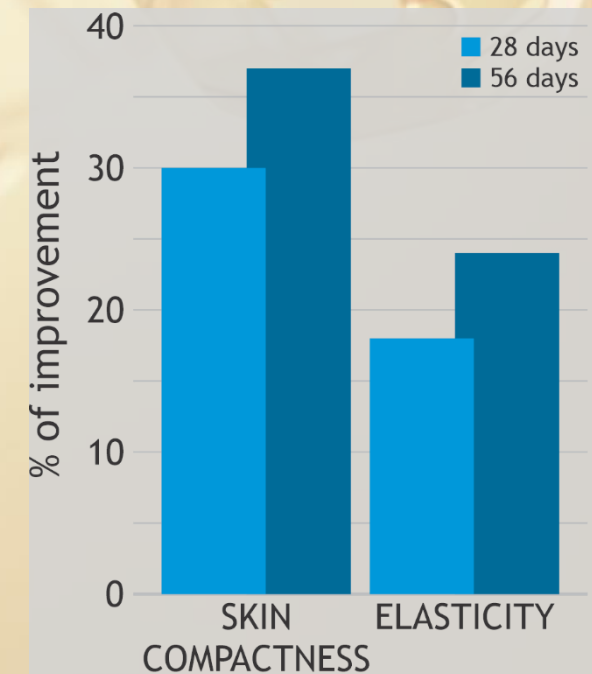
Cream containing 5% solution prepared with 1 g/L SCH REINFORCE PEPT 78 powder.



Evaluation of the anti-wrinkle and re-densifying effect.

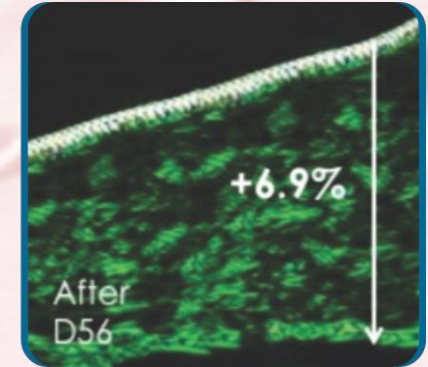
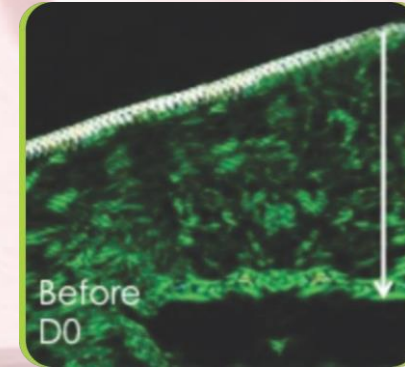
Clinical test in 20 volunteers, women 40-60 years.

SCH REINFORCE PEPT 78 was applied to the face twice daily for 56 days.



SCH REINFORCE PEPT 78

ECHOGRAPHY ANALYSIS



AVERAGE DECREASE IN THE WRINKLE VOLUME
AROUND 18%, 27% IN THE BEST CASE.

Assessment of dermal thickness and density. The global dermal profiles at Day 56 are more regular, indicating the re-densifying of the tested product.

SPECIFICATIONS

- 🌱 Appearance: Powder and solution
- 🌱 INCI.: Water, dextran, Palmitoyl Oligopeptide-78
- 🌱 Recommended dose: 3-5%
- 🌱 Legal status: EU|US|CN|JP|CA|AUS

THANK YOU

*Thank you for your interesting and attention!
If you need sample and technical data, please
contact us without hesitation*

Special
Chemicals